

POLICIES 2025

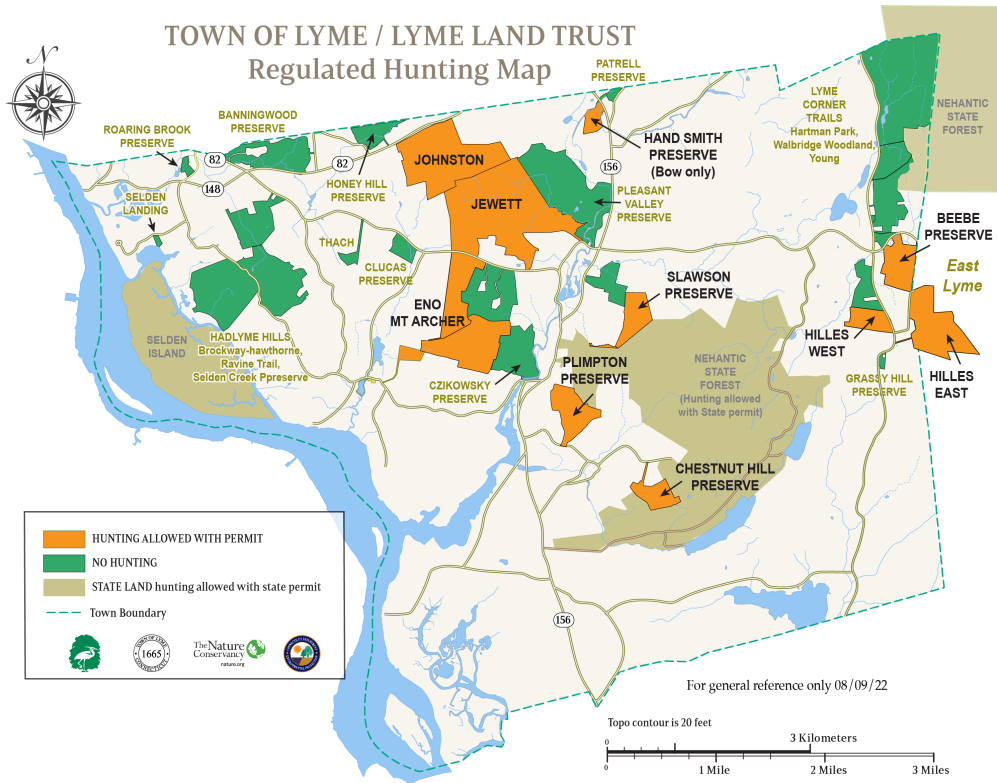
General

1. Fluorescent orange is highly recommended for all people and their dogs September 15 through January 31.
2. Consent to hunt may be issued for those properties shown in the accompanying map and Hunting Season Chart (page 3).
3. The preserves where hunting is allowed:
Lyme Land Trust properties:
 - Beebe–74 acres
 - Chestnut Hill–40 acres
 - Plimpton–88 acres
 - Hand Smith- 24 acres (Bow only)
 - Hilles West–50 acres
 - Hilles East–120 acres
 - Slawson–54 acresRiver to Ridgetop Properties
 - Mt Archer Woods (TOL)/Eno Preserve (LLT)–235 acres
 - Johnston Preserve (TOL)–250 acres
 - Jewett Preserve (TOL)–434 acres
4. Most State hunting laws and regulations apply, with some private land and Lyme regulations. Abide by bag limits for private land. For specifics on the State Regulations, consult the current CT DEEP Hunting and Trapping guides.
5. Hunters are required to know the boundaries of the property being hunted, will not hunt within 100' of the boundaries and will abide by the 500' & 250' setbacks from structures.
For Mt. Archer Woods this includes the boundaries of the two private properties and the location of the stone wall which separates the hunting from the no hunting areas. There are yellow markings as one approaches the hunting area from the non-hunting area. There are white markings as one approaches the non-hunting area from the hunting area.
In Jewett, stay 500 feet from the border of Pleasant Valley Preserve.
6. Tree stands must be at least 100' from hiking trails and face away from boundaries and structures. Remove tree stands and hunting blinds after the season is over.
7. No hunting on Saturday or Sunday all seasons.
8. In general motorized vehicles are not allowed on any of the Preserves. In this program, however, they may be used to facilitate the removal of harvested deer in accessible areas.
9. Hunters are asked to seek alternatives to lead ammo and shot for all methods of hunting on TOL/LLT Preserves. Lead is toxic to humans and lethal for many scavengers such as bald eagles. It also can contaminate the soil and seep into the ground water.
10. Do not harm or harass coyotes. Permits do not include permission to hunt coyotes.
11. If you encounter poachers or suspicious persons, do not confront. Call CT DEEP Dispatch 860-424-3333. Notify the Open Space Coordinator openspace@townlyme.org after you have filed a report with CT DEEP Dispatch.

Seasons - see Hunting Season Chart Below

12. Spring Turkey: April 30-May 31, ½ hour before sunrise to noon (note the hours are

different than the State regulations), Consent to hunt is restricted to Monday through Friday. Be aware that the preserves remain open to hikers and other users. Do not hunt within 100 feet of hiking trails. During this season bow only permitted in the Jewett



Hunting Season Chart

Town of Lyme and Land Trust Preserves where hunting is allowed

Season		2025											2026								
		Johnston ~250 ac	Jewett ~434 ac	Mt. Archer ~135 ac	Eno ~100 ac	Hilles West ~50 ac	Hilles East ~120 ac	Plimpton ~80 ac	Beebe Preserve ~74 ac	Chestnut Hill ~40 ac	Hand-Smith ~23 ac	Slawson ~55 ac	4/30 - 5/31	9/15 - 10/03	10/04 - 10/31	11/01 - 11/18	11/19 - 12/09	12/10 - 12/23	12/24 - 12/31	1/1 - 1/31	
Deer/Turkey	Bow	✓	✓	✓	✓	✓	✓	✓	✓	✓	✓	✓	✓	✓	✓	✓	✓	✓	✓	✓	✓
Deer	Shotgun/rifle	✓	✓	✓	✓	✓	✓	✓	✓	✓	✓	✓	✓	✓	✓	✓	✓	✓	✓	✓	✓
Deer	Muzzleloader	✓	✓	✓	✓	✓	✓	✓	✓	✓	✓	✓	✓	✓	✓	✓	✓	✓	✓	✓	✓
Fall Turkey	Firearm	✓	P	✓	✓	✓	✓	✓	✓	✓	✓	✓	✓	✓	✓	✓	✓	✓	✓	✓	✓
Spring Turkey		✓	B	✓	✓	✓	✓	✓	✓	✓	✓	✓	✓	✓	✓	✓	✓	✓	✓	✓	✓

✓ = Consent to hunt required
 B = Bow only
 P = Hunting prohibited
 Preserve open to all; consent to hunt restricted to Monday through Friday
 Preserve open only to hunters Monday through Friday; open to others on Saturday and Sunday

Note: TOL/LLCT follows the State Land Muzzleloader Season Dates

Preserve.

13. Bow Hunting Deer/Turkey: Sept 15 - Nov 18 and Dec 24 - Jan 31. Consent to hunt is restricted to Monday through Friday. Be aware that preserves will remain open to hikers

and other users every day. Do not hunt within 100 feet of hiking trails. Deer/turkey bow hunting is not be allowed during the deer firearm season.

14. Turkey Shotgun: Oct 4 - Oct 31. Consent to firearm hunt turkey in October is restricted to Monday through Friday at Plimpton, Beebe, Chestnut Hill, Hilles East and West and Slawson Preserves; hunters with consent to hunt deer with bow on these properties should be aware of this. Be aware that preserves will remain open to hikers and other users every day.
15. Deer Firearm: Deer Shotgun/Rifle: Nov 19 -Dec 9, Muzzleloader: Dec 10 to Dec 23. TOL/LLT observes the State Land Muzzleloader Season Dates. Consent to hunt deer with firearm is restricted to Monday through Friday; on these days preserves will be closed to other users.
16. The general public will be notified of these closures in a press release in the local paper and by signs at the trailheads and locations where trails cross into the hunting-permitted Preserve.

Requesting Consent to Hunt From the Open Space Coordinator

For the Spring Season, consent to hunt may be requested a month prior to beginning of the season. In the Fall, consent to hunt for all seasons and implements may be requested after August 12.

To request consent, mail a completed consent form (you may print and use the partly filled out samples) and a stamped return envelope to:

Open Space Coordinator, Lyme Town Hall, 480 Hamburg Rd, Lyme CT 06371.

Emailed requests are not accepted. If you are hunting as a group, please submit the consent forms as a group and include a large self-addressed envelope with extra postage. If an entire group cannot be accommodated, your request will not be granted unless you indicate it is OK to break up the group.

Apply early. Permits will be granted as space allows. Parcel preference will be given to those who have hunted a property historically, helped with preserve maintenance and replied by email with hunting survey results. If the permit request is received after the season has started, it will be granted if space is available. Junior license holders (persons 12 through 15 years of age) may be granted consent and must be accompanied by a licensed hunter 18 years of age or older while hunting.

For more info, email: openspace@townlyme.org Lyme Town Hall: 860 434-7733
Visit: <https://www.lymelandtrust.org/hunting-program/>